



# Schenectady City School District

Mosaic Associates  
Michael Fanning, AIA LEED AP

Turner Construction  
Larry E. Tune, PM

Phase I – Capital Project Update

15<sup>th</sup> of June, 2016



# CAPITAL PROJECT UPDATE | Outline

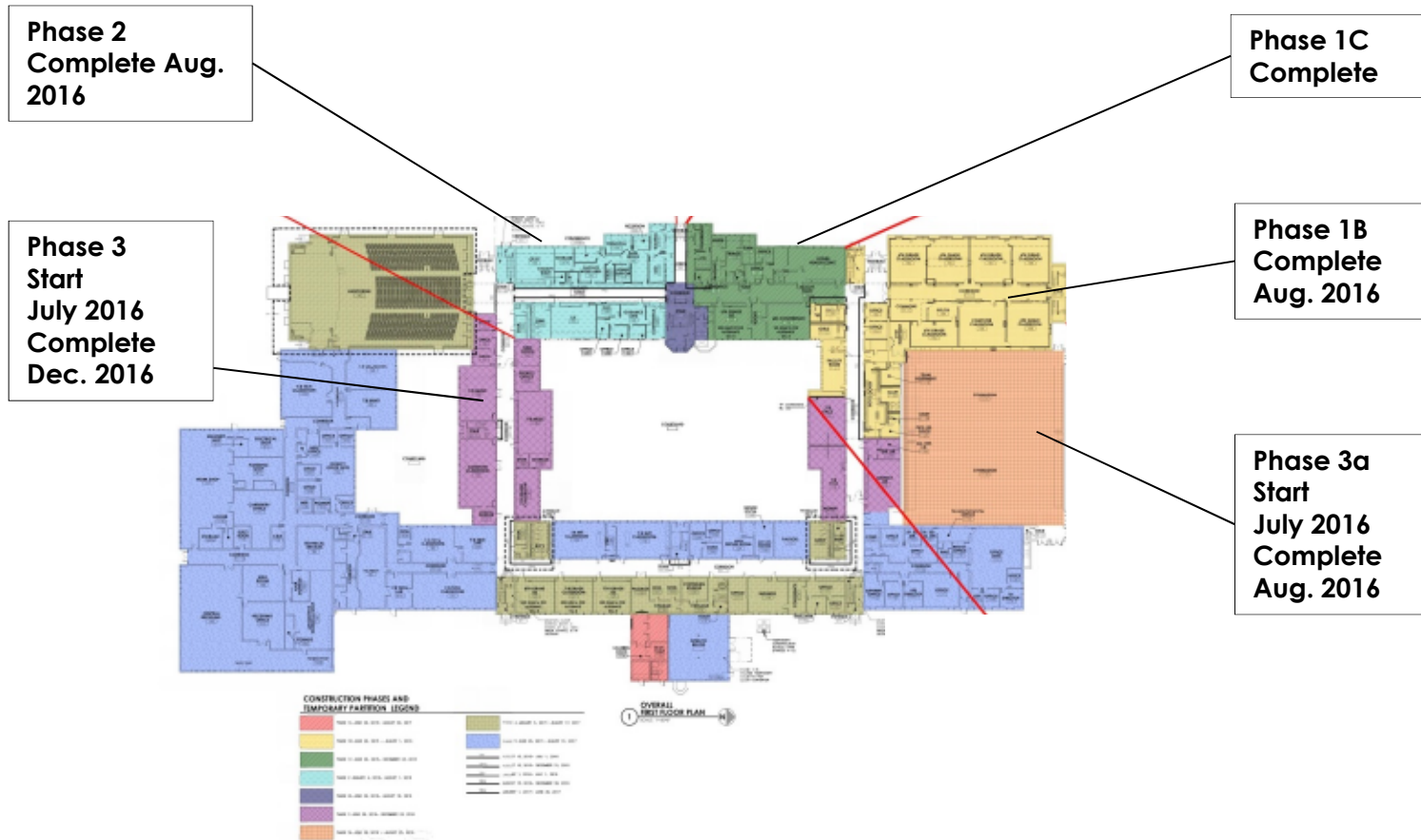
- Group B Projects Status Update:  
Mont Pleasant Middle School  
Oneida Middle School
- Group C Projects Status Update:  
Central Park Middle School  
Howe Elementary  
Van Corlaer Elementary
- Group D Projects Status Update:  
Hometown Health Center @ MPMS  
Hometown Health Center @ SHS  
Ph 1B - CPMS – Exterior Masonry / Roof Repair Project
- Next Steps:  
Critical & Milestone Dates





# CAPITAL PROJECT | Group B

- MPMS – Phases 1, 2 & 3



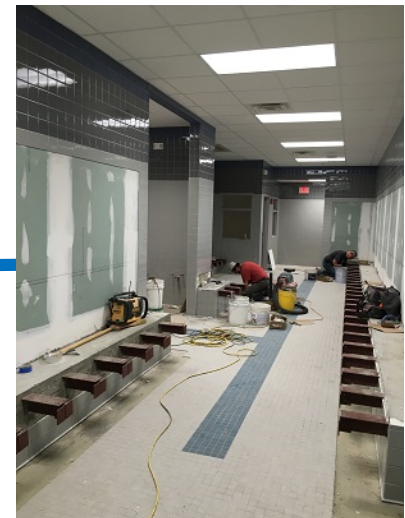
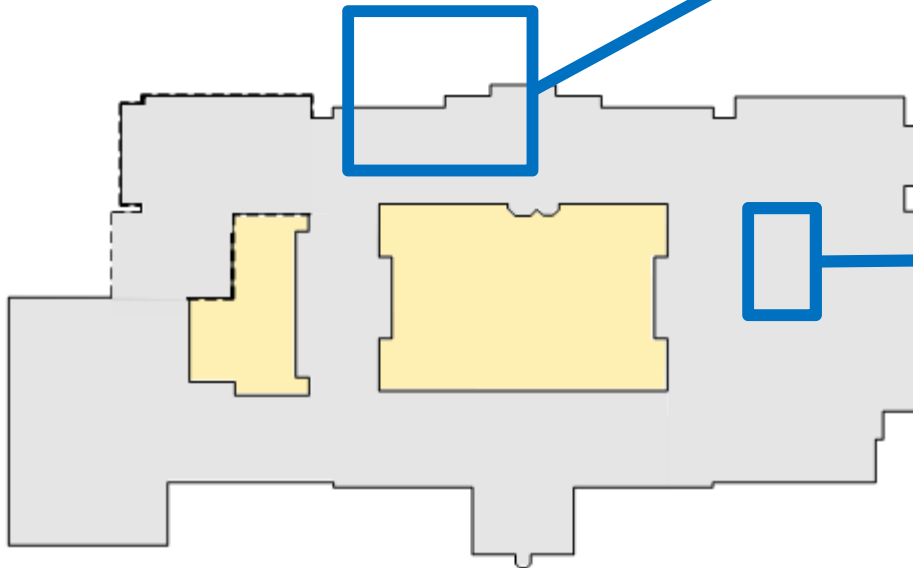


# CAPITAL PROJECT | Group B

- MPMS – First Floor



Middle School - Main Office

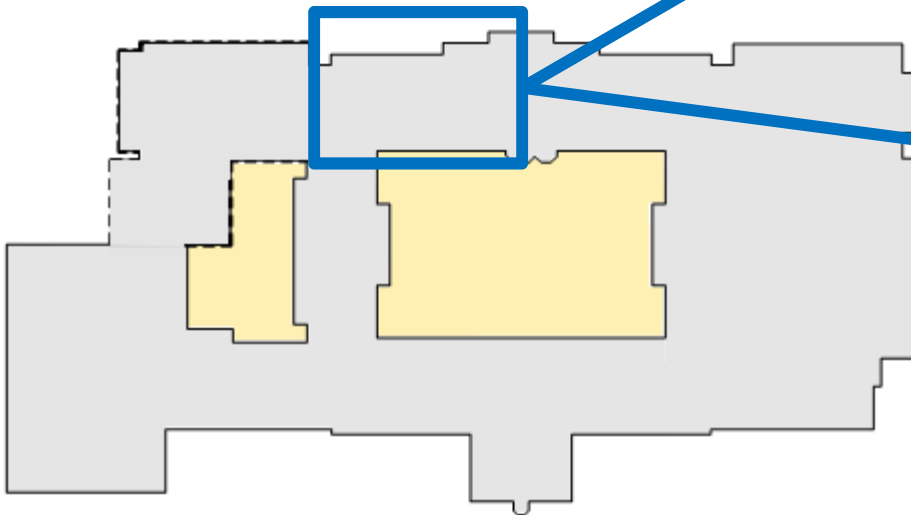


Gym Locker Room



# CAPITAL PROJECT | Group B

- MPMS – Third Floor

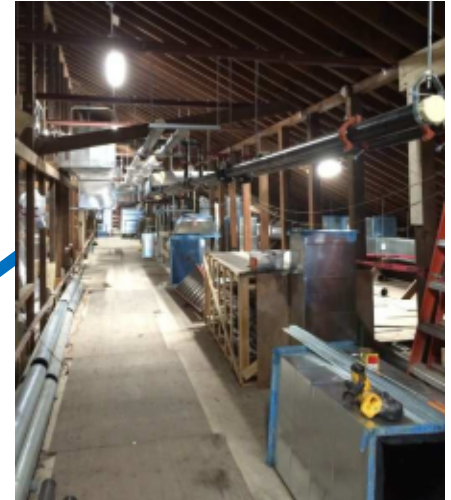
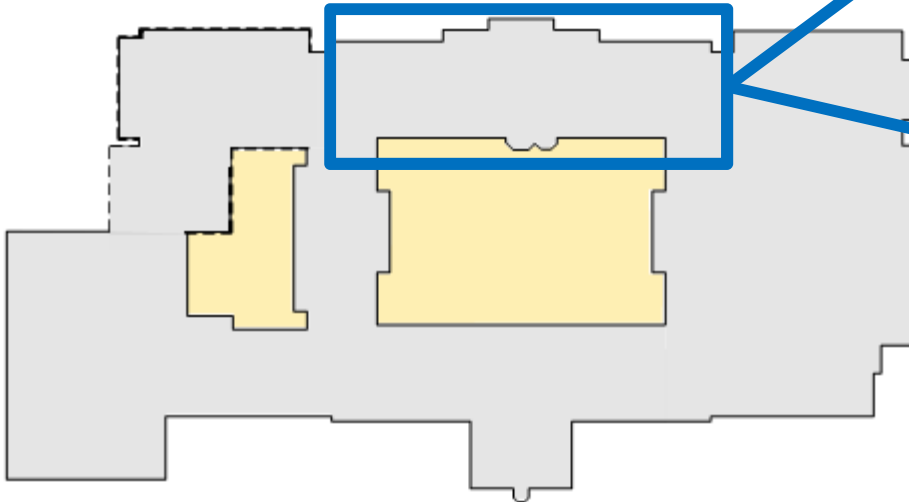


Library / Media Center



# CAPITAL PROJECT | Group B

- MPMS – Attic Level

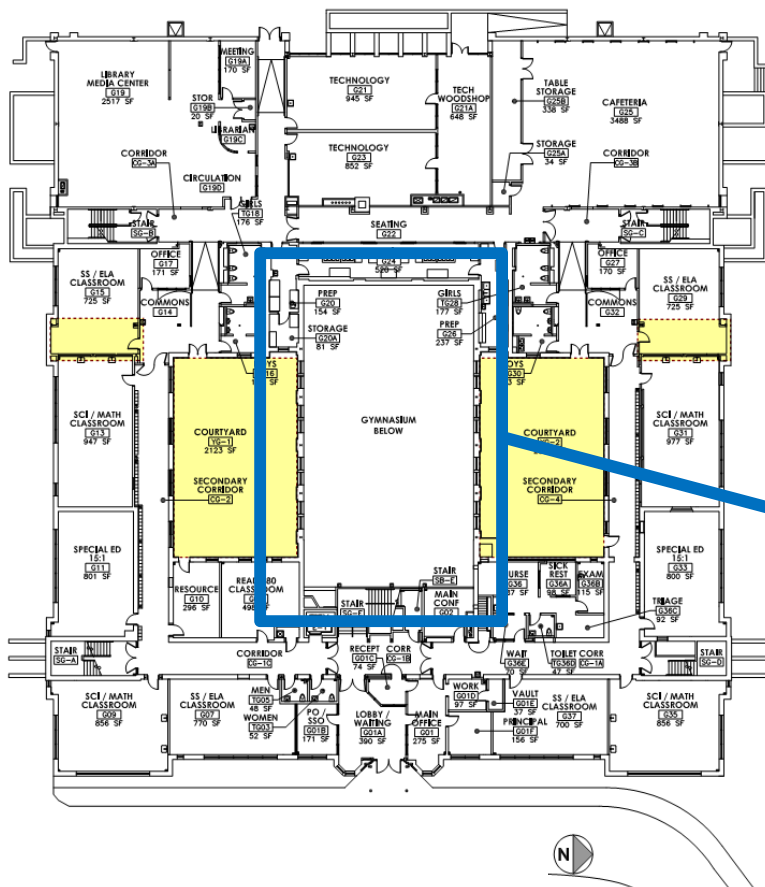


Attic Mechanical Systems



# CAPITAL PROJECT | Group B

- OMS – Ground Floor Plan

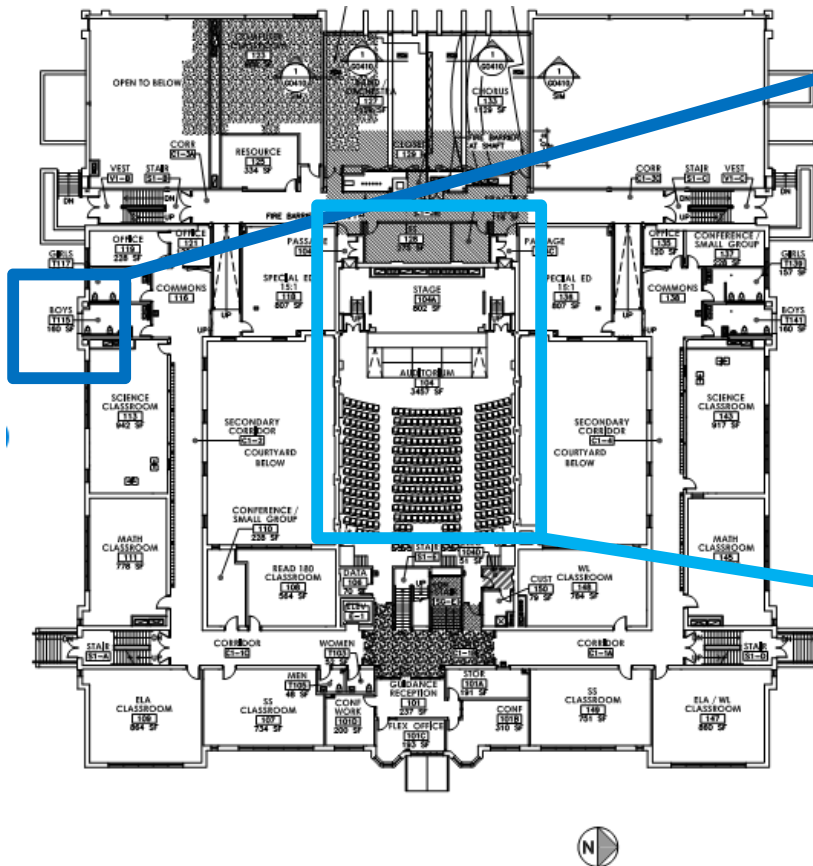


Ground Floor Gym – finishes in progress



# CAPITAL PROJECT | Group B

- OMS – First Floor Plan



Exterior Masonry Work

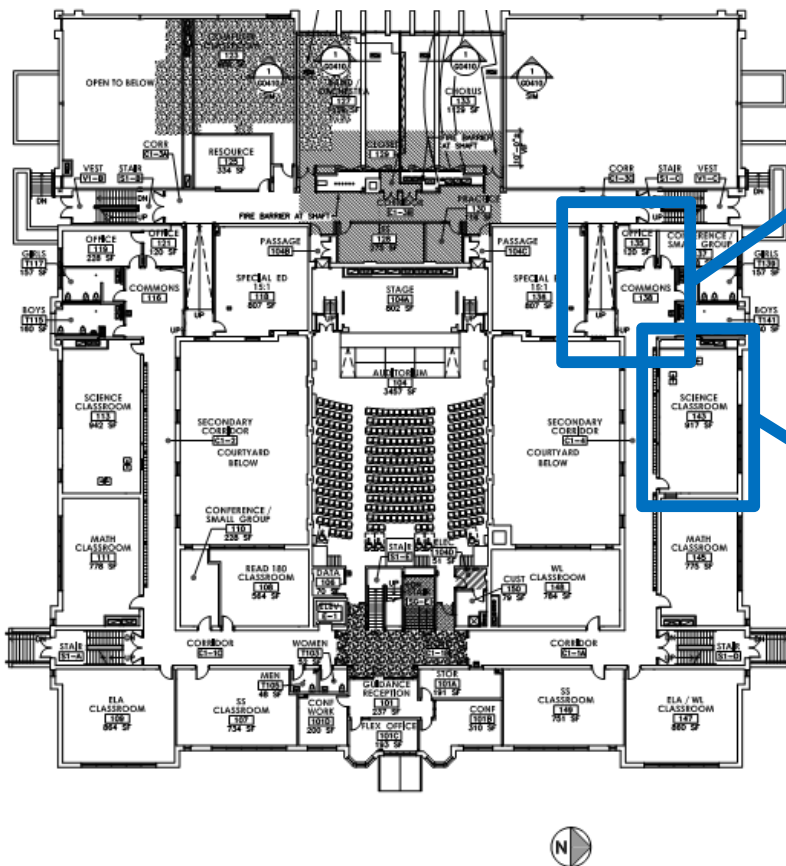


Auditorium New Wood Flooring



# CAPITAL PROJECT | Group B

- OMS – Second Floor Plan



Commons Area



Science Classroom



## CAPITAL PROJECT | Group C

- CENTRAL PARK MIDDLE SCHOOL –
  - Contracts and product submittals are being processed.
  - Contractor is mobilizing for June 27 start of construction.





## CAPITAL PROJECT | Group C

- Van Corlaer ES - drawings & specifications at NYSED;
  - Architectural approval received.
  - Engineering review comments received.
  - Project is out to bid.
- Howe Elementary School -
  - Contracts and product submittals are being processed.
  - Contractor is mobilizing for June 27 start of construction.





# CAPITAL PROJECT | Group D

- Hometown Health Centers
  - MPMS & SHS:
    - Hometown Health accepted construction budgets.
    - Submittals in progress.
    - Construction start 6 July, 2016.





## CAPITAL PROJECT | Group D

- Phase 1B - CPMS – Exterior Masonry / Roof Repairs
  - Bond Referendum – Passed
  - Design in progress.





## CAPITAL PROJECT UPDATE | Next Steps & Milestones

- Spring 2016 Anticipate SED approval for Van Corlaer Elementary School.
- June 28 2016 Anticipate receiving VCES bids.
- July 2016 Anticipate commencing construction at CPMS / HOWE / VCES
- August 2016 District move into OMS, CPMS & MPMS
- September 2016 Reopen Oneida Middle School; Open Mt Pleasant MS & Central Park MS with 6th, 7th & 8th Grades.
- Fall 16 – December 16 Ongoing construction at CPMS.
- Fall 16 – Spring 17 Ongoing construction MPMS, HOWE & VCES.
- Summer 2017 Construct New bus drop off loop at MPMS.



THANK YOU | Any Questions?

